



15
WHITEHALL

LONDON • SW1A 2DD

To Let 3,400 Sq Ft (315.9 Sq M)
Impressive Fully Fitted Office Accommodation

A perfectly located
office building
by Trafalgar Square





Victorian Elegance in SW1

15 Whitehall is prominently located on the east side of Whitehall in close proximity to Trafalgar Square.

The second floor of 15 Whitehall has undergone a recent comprehensive refurbishment to provide 3,400 sq. ft of impressive fully fitted office accommodation.





Prestigious Neighbours

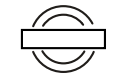
15 Whitehall is exceptionally located just moments away from Trafalgar Square, Horse Guards Parade, St Martin's in The Fields, the National Gallery and The Royal Opera House.

Covent Garden is within a few minutes' walk with its world renowned restaurants including Rules, The Ivy, Dishoom, Hawksmoor and The Delaunay and world class shopping facilities featuring retailers such as Polo Ralph Lauren, Jo Malone, Hackett, Tom Ford, Oakley and Paul Smith.





Well Connected



1 MIN WALK

Charing Cross Underground
Bakerloo & Northern Lines

5 MIN WALK

Embankment Underground
Northern District & Circle & Bakerloo Lines



5 MIN WALK

Charing Cross mainline



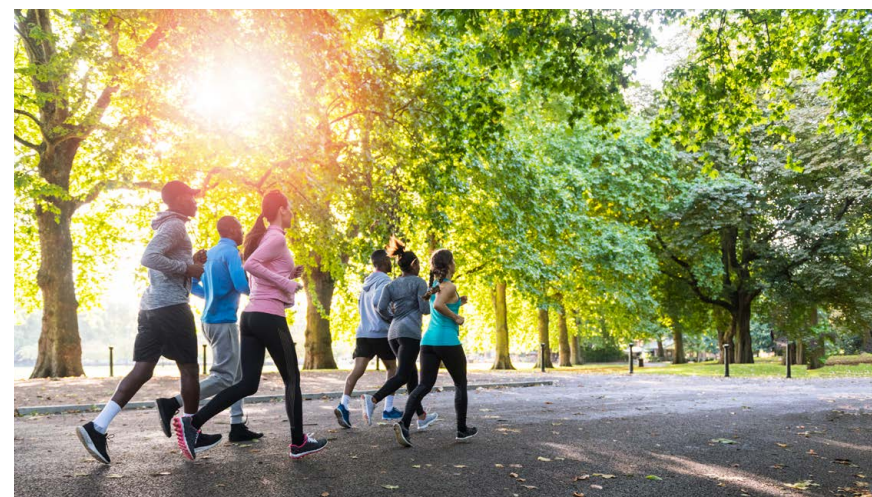
BUSES

A multitude of bus routes conveniently operate along Whitehall, Northumberland Avenue & Trafalgar Square.



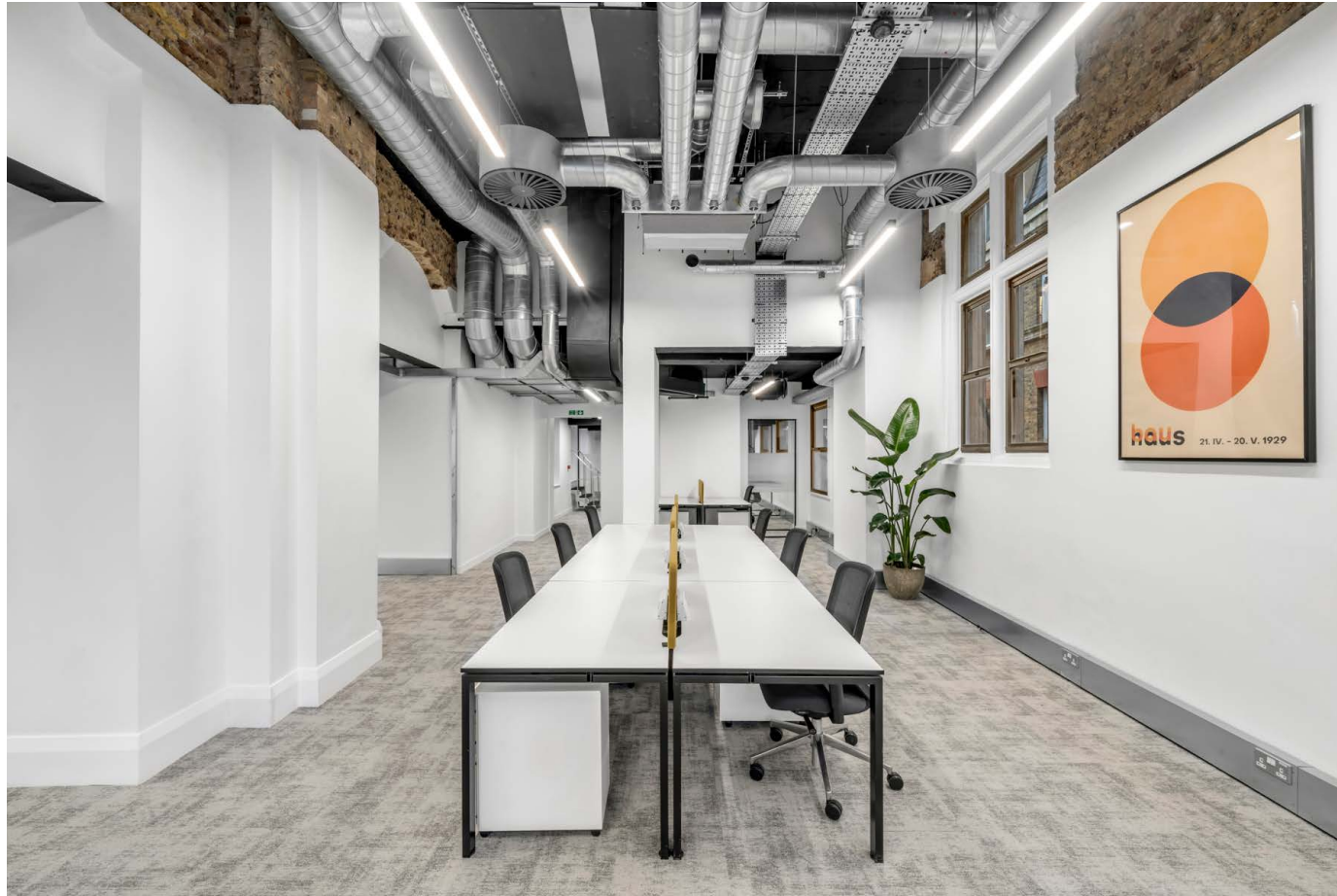
RESTAURANTS & RETAIL

World renowned restaurants & world class shopping facilities are within a few minutes' walk





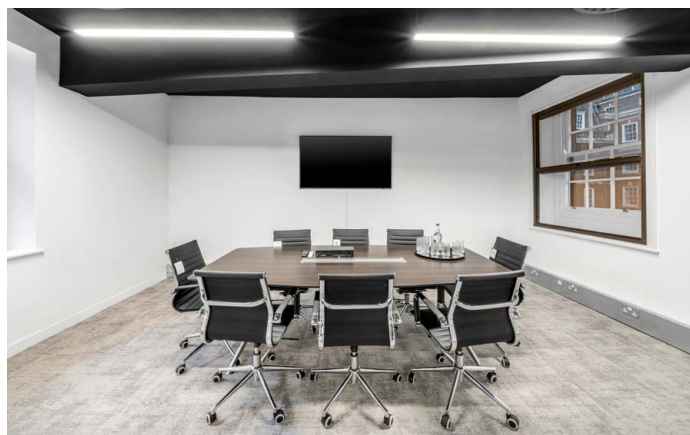
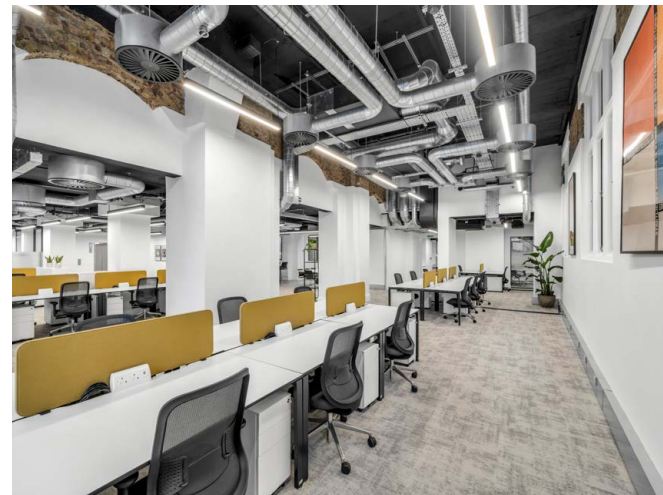
3,400 Sq Ft of Modern
Interior Office Space
Surrounded in Victorian Style



Category A Office Accommodation

The second floor of 15 Whitehall has undergone a detailed and very comprehensive refurbishment.

The refurbishment includes new air-conditioning, exposed ceilings with LED lighting, kitchen and break out area and a spectacular double volume space with views over Whitehall and Trafalgar Square.



3,400 Sq Ft
(315.9 Sq M)
Second floor

WHITEHALL



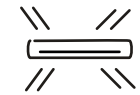
CRAIG'S COURT



Double Volume Vaulted Ceilings



New air conditioning system



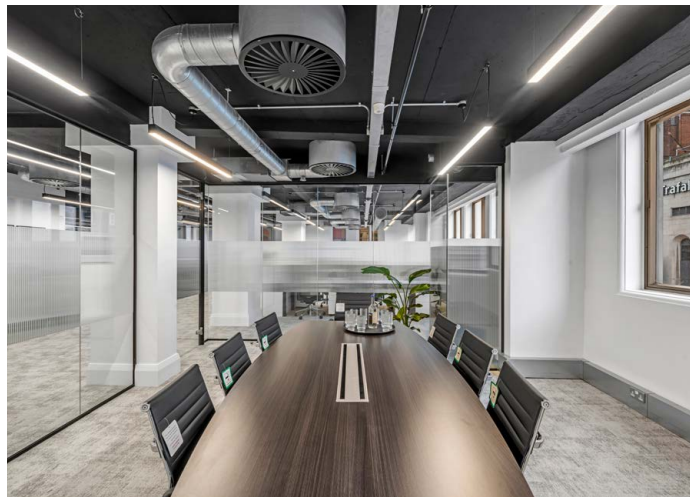
LED lighting



New shower & male and female WCs



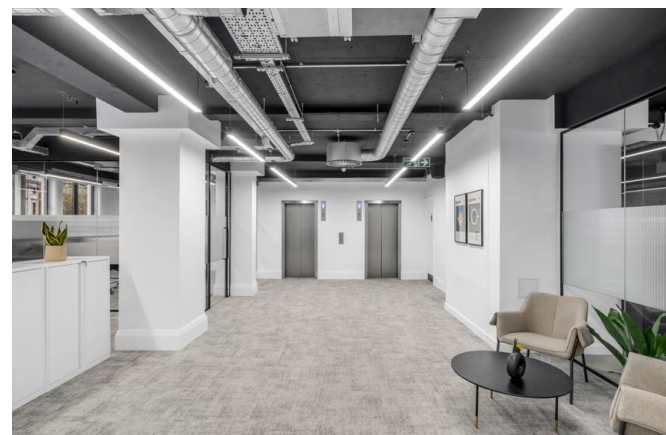
Exposed concrete ceilings



New fitted kitchen with breakfast island & break out area



Perimeter metal skirting providing IT and power



Manned ground floor reception with 2 passenger lifts



New carpets and wood flooring

15 WHITEHALL

LONDON • SW1A 2DD

Business Rates:

The property has a current rateable value of £141,000.

Service Charge:

On application.

Energy Performance Certificate:

The building has an EPC of 52 (C).

Terms:

The property is available on a new lease on flexible terms.

Legal Costs:

Each party to be responsible for its own legal costs.

Viewing:

Strictly by appointment with the joint agents:

Jonathan Gilbert

T +44 (0)20 7788 3817

M +44 (0)7770 576 918

E Jonathan.Gilbert@htc.uk.com

Chris Wright

M +44 (0)7884 865 261

E Chistopher.Wright@nmrk.com

Jack Hopkins

T +44 (0)20 7788 3817

M +44 (0)7721 192 547

E Jack.Hopkins@htc.uk.com

Antonia Bianchi

T +44 (0)20 3486 3671

M +44 (0)7425 477 679

E Antonia.Bianchi@nmrk.com

James Proctor

T +44 (0)20 7491 7323

M +44 (0)7779 789 957

E James.Proctor@htc.uk.com

**Hartnell
TaylorCook**

NEWMARK

Conditions under which these particulars are issued:

All details in these particulars are given in good faith, but Hartnell Taylor Cook LLP, nor Newmark for themselves and the Vendors/ Lessors of this property for whom they act give notice that:- 1. These particulars do not and shall not constitute, in whole or in part, an offer or a contract or part thereof, and Hartnell Taylor Cook LLP nor Newmark have no authority to make or enter into any such offer or contract. 2. All statements contained in these particulars are made without acceptance of any liability in negligence or otherwise by Hartnell Taylor Cook LLP nor Newmark for themselves or for the Vendors/Lessors. 3. None of the statements contained in these particulars is to be relied on as a statement or representation of fact or warranty on any matter whatsoever, and intending tenant must satisfy themselves by whatever means as to the correctness of any statements made within these particulars. 4. The Vendors/ Lessors do not make, give or imply, nor do Hartnell Taylor Cook LLP nor Newmark or any person in their employment have any authority to make, give or imply, whether in these particulars or otherwise, any representation or warranty whatsoever in relation to the property. The statement does not affect any potential liability under the Property Misdescriptions Act 1991. 5. The successful tenant will be required to provide the usual information to satisfy the ANTI MONEY LAUNDERING requirements when Heads of Terms are agreed. JANUARY 2025