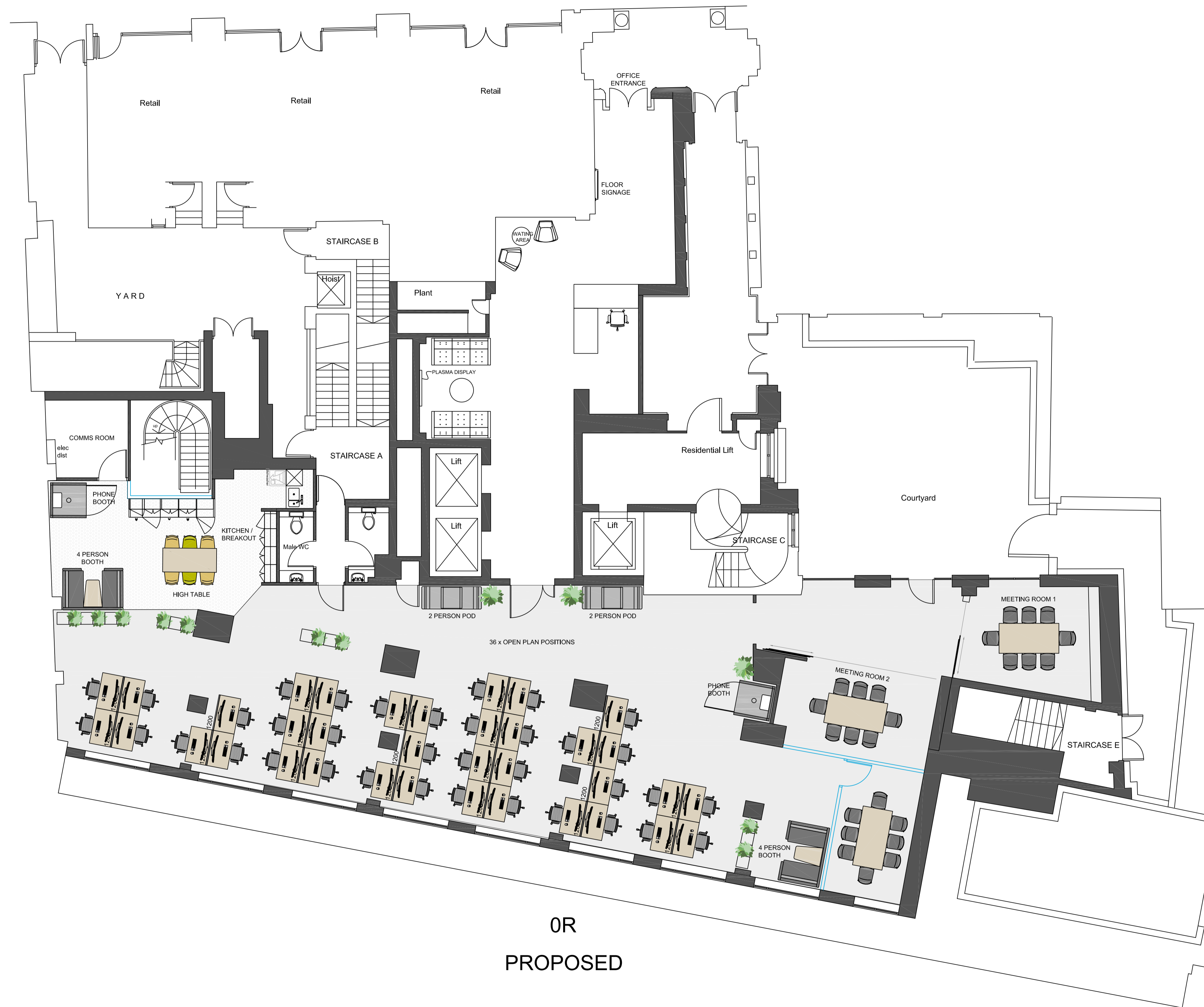


| Rev. | Description | Date |
|------|-------------|------|
| | | |



| Client | |
|--|--|
| Sovereign Facilities | |
| Project | |
| Carthusian House First Floor Proposed Layout | |
| Drg.No. | |
| 4080 00 | |
| Scale | |
| 1:75@A1 | |
| Drawn | |
| CB | |
| Date | |
| 02.11.23 | |



Rapid Office Systems Ltd | t: +44 (0) 1709 755 666
 39 Victoria Road | f: +44 (0) 1709 744 546
 Ramford | sales@rapidoffice.co.uk
 Essex RM1 2LH | www.rapidoffice.co.uk

© This drawing is the property of Rapid Office Systems Ltd, and should not be copied or disclosed to a third party without written consent.