

ARNOLD

Great Eastern Street
London EC2

2 Retail Units to Let – Class E
1,963 sq ft / 4,410 sq ft / 6,373 sq
ft



ARNOLD is

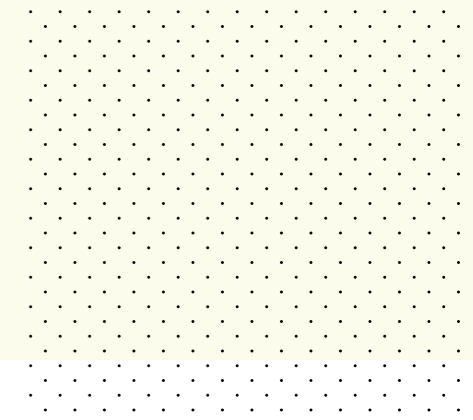
Shoreditch's latest exciting mixed use scheme which provides approx. 75,000 sq ft of office and retail space. Retail units range from 1,963 to 6,373 sq ft.

Located just north of The Stage development – a mixed use scheme which includes over 400 residential units and also Amazon's new London HQ, at Principal Place.



Schedule of areas

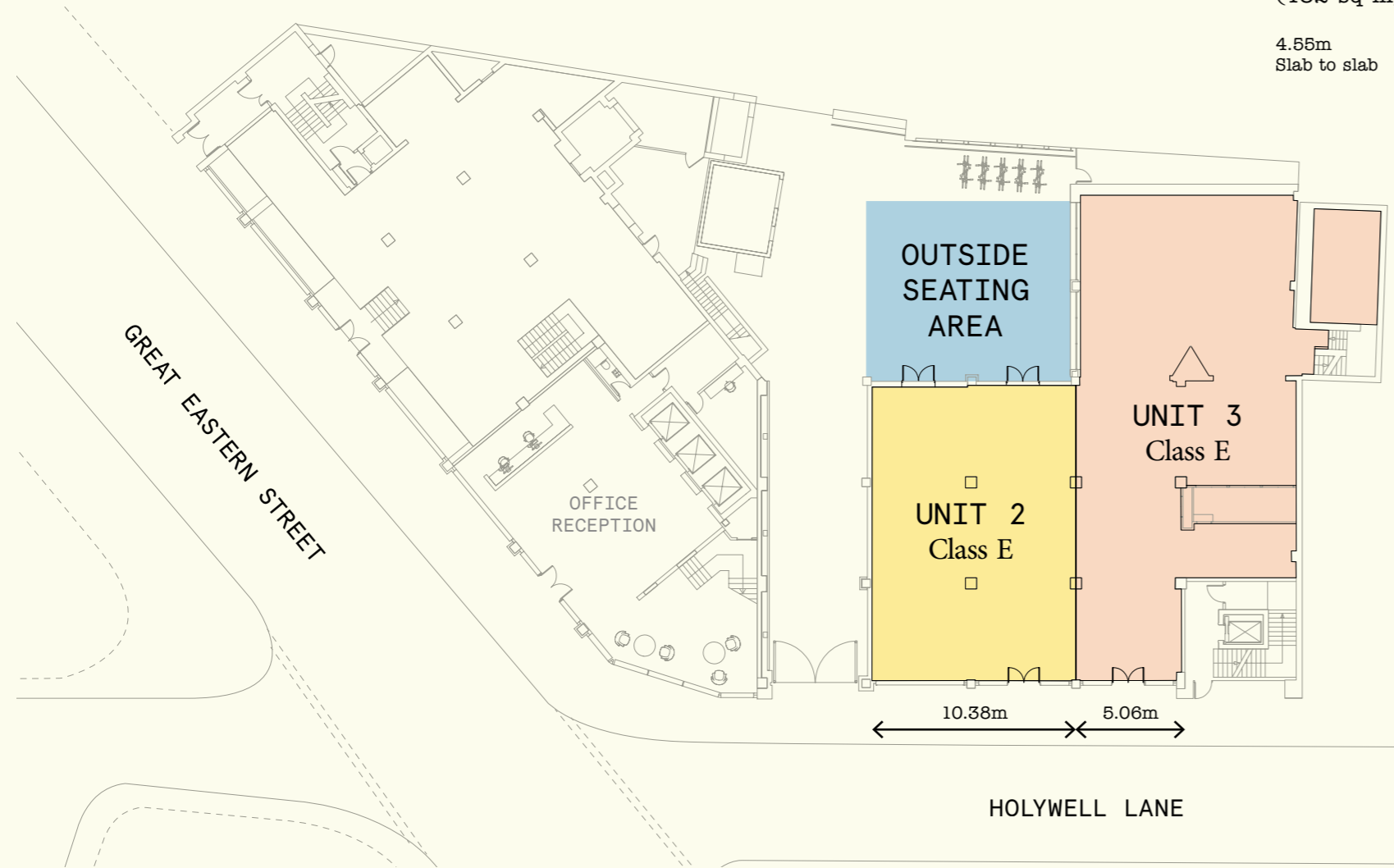
Unit	Use	Floor	sq ft	sq m
Unit 02	Class E	Ground	1,963	182
Unit 02 Total			1,963	182
Unit 03	Class E	Ground	3,147	292
		Upper Ground	260	24
		Upper First	285	27
		Basement	718	67
Unit 03 Total			4,410	410
Grand Total			6,373	592



Floor plans

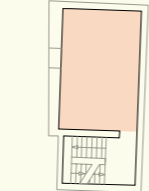
Ground

3 - 4



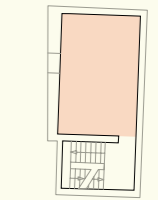
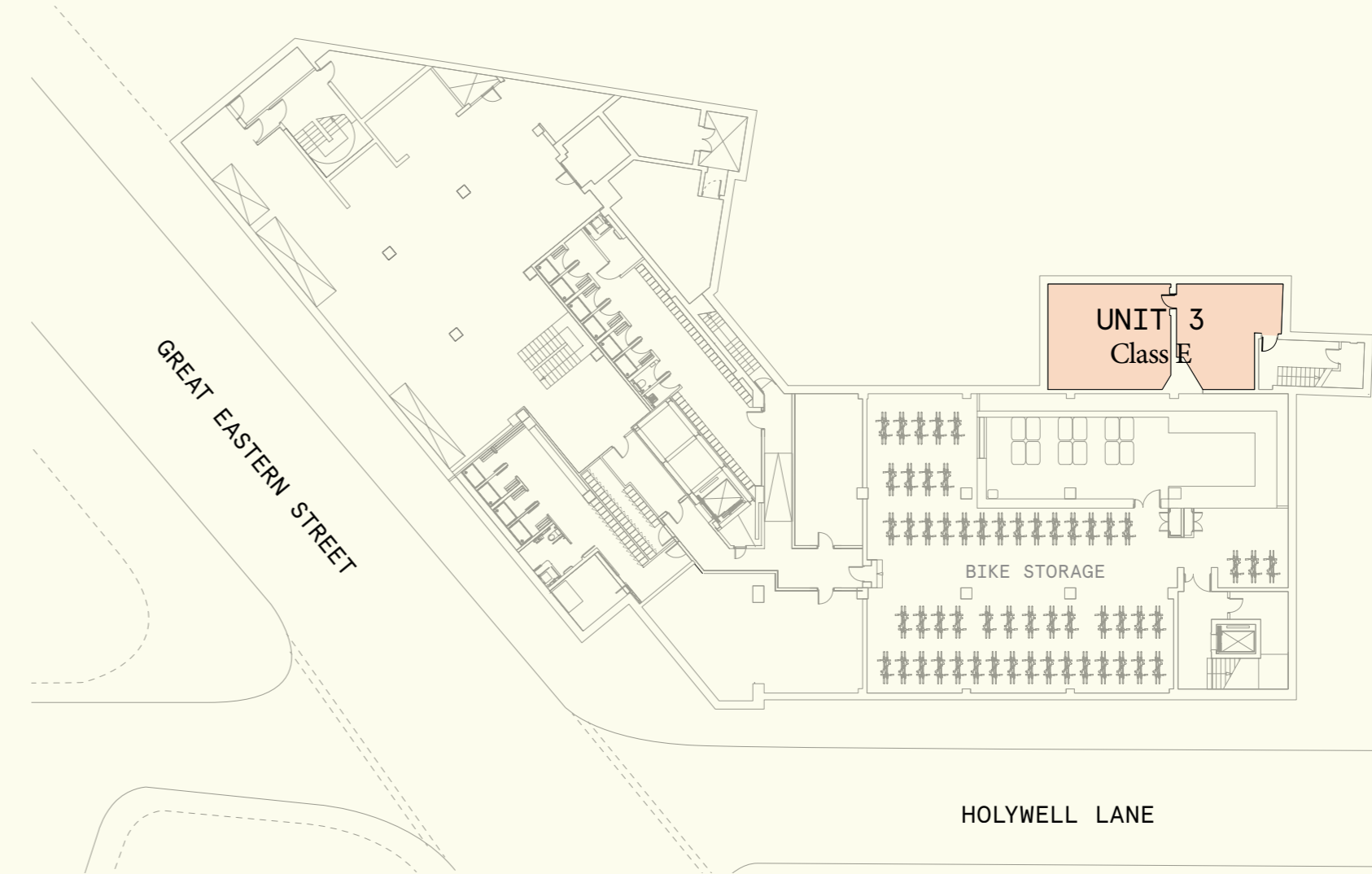
Unit 02
Class E
1,963 sq ft
(182 sq m)
4.55m
Slab to slab

Unit 03
Class E
4,410 sq ft
(410 sq m)
4.55m
Slab to slab
700mm x 700mm
Duct provision



Upper First

Basement



Lower Ground

Core



ARNOLD

Shoreditch is home to highly-curated spaces and places that blend shopping, socialising and living.

Arnold is choice, and loads of it. Whether its a business lunch, a quirky bar, a haircut or a new trilby, there is no limit to what you'll find.

And with the arrival of Amazon at Principal Place and the residential development of The Stage underway – the retail offer of the area will continue to evolve and grow.

5 - 6



Local retailers include

Aesop / Sunspel / J Crew / Kite / Goodhood / SCP / Nike Lab / Carhartt / Labour & Wait / All Saints / Sainsbury's / A.P.C / Browns East / Aimé / Modern Society / Blue Mountain School / Folk / Club Monaco / Le Labo / BOXPARK / Article / Urban Outfitters / Rag & Bone / Zadig & Voltaire / Superga / Present / Sneakersnstuff / Sister Ray / Mr Start / tokyobike / Cutler & Gross

Local amenities

Eat & Drink

- 01 Bone Daddies
- 02 Shoreditch Grind
- 03 The Draft House
- 04 Passo
- 05 Nuala
- 06 Tramshed
- 07 The Clove Club
- 08 Dinerama
- 09 Flat Iron
- 10 José Pizzaro
- 11 Gunpowder
- 12 Smoking Goat
- 13 Brat

Hotels

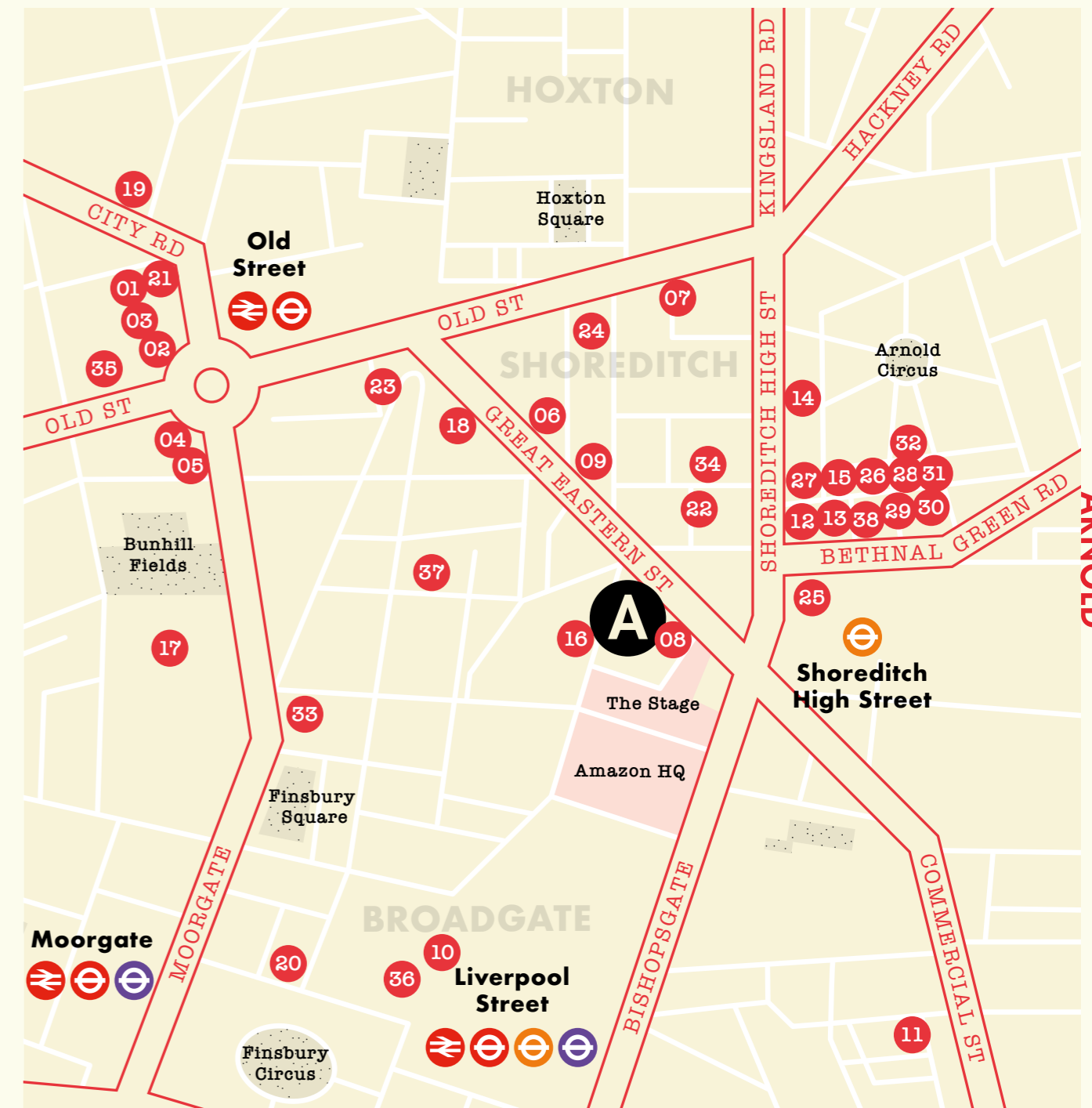
- 14 Ace Hotel Shoreditch
- 15 Boundary
- 16 The Curtain
- 17 HAC Armoury House
- 18 The Hoxton
- 19 M by Montcalm
- 20 South Place Hotel
- 21 Z Hotel
- 22 Citizen M

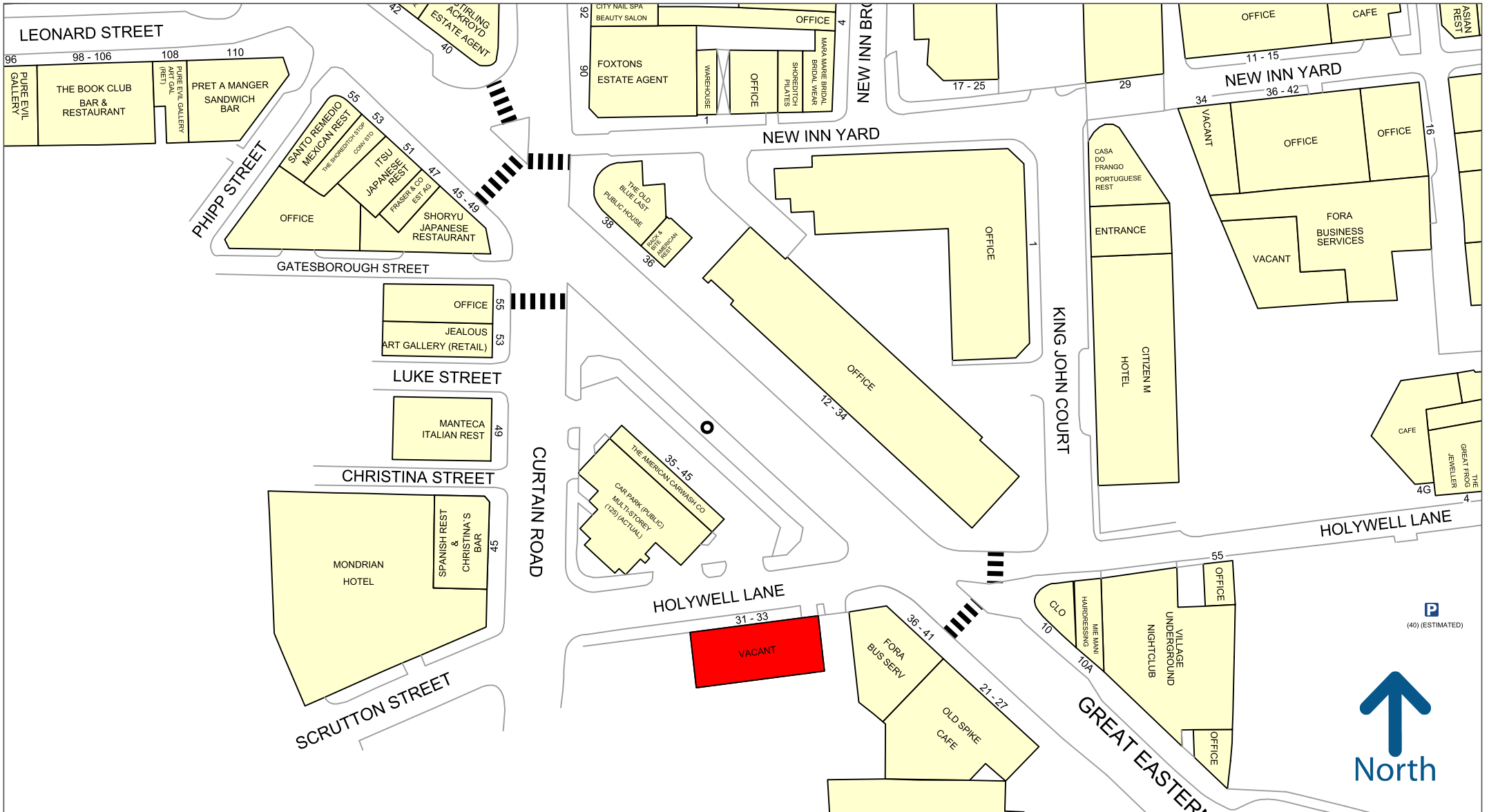
Retail

- 23 tokyobike
- 24 Goodhood
- 25 BOXPARK
- 26 A.P.C.
- 27 Sunspel
- 28 Kite
- 29 Aesop
- 30 J Crew
- 31 Browns
- 32 MHL

Leisure

- 33 Barrys Boot Camp
- 34 Frame
- 35 Gymbox
- 36 lRebel
- 37 The Vault Gym
- 38 London Shuffle Club





50 metres

Experian Goad Plan Created: 28/01/2025

Created By: Hartnell Taylor Cook LLP

For more information on our products and services:

www.experian.co.uk/business-products/goad | salesG@uk.experian.com

ARNOLD is:

talktoarnold.london

Hartnell Taylor Cook

James Proctor

M: 07999 789 957

james.proctor@htc.uk.com

Jonathan Moore

M: 07999 041 713

jonathan.moore@htc.uk.com

George Ives

M: 07442 424 528

george.ives@htc.uk.com

Or contact Joint Agent

Allsop - 020 7588 4433

Hartnell TaylorCook

Misrepresentations Act 1967

Whilst all the information in this brochure is believed to be correct, neither the agent nor the client guarantee its accuracy nor is it intended to form any part of any contract.

All areas quoted are approximate.

Feb 2025.

Designed & Produced by Cre8te

020 3468 5760 – cre8te.london

THE PROPERTY TRUST GROUP